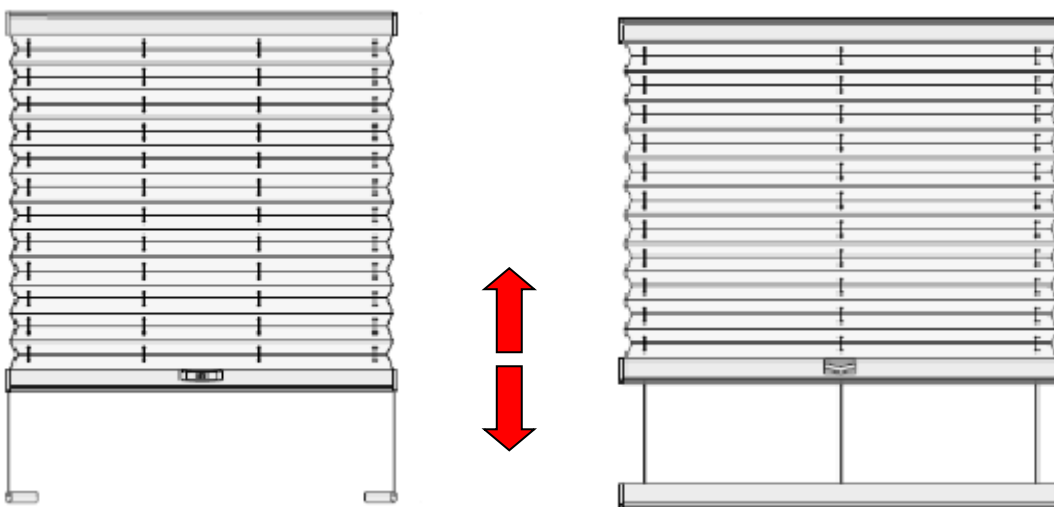




CONTROL AND MAINTENANCE MANUAL: PLISSE BLINDS

1. CONTROL

CONTROL BY HANDLE



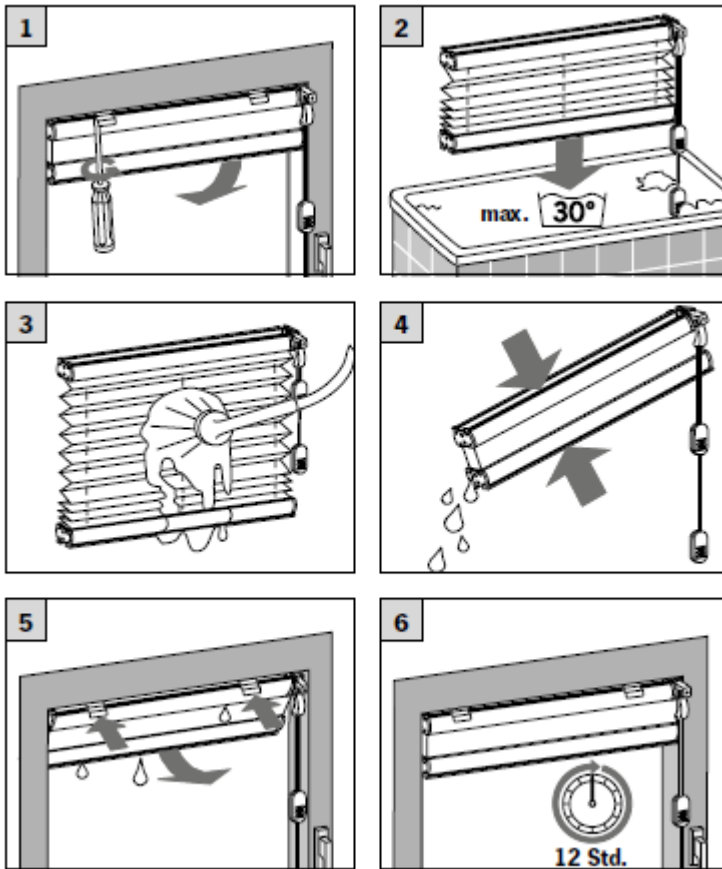
DESCRIPTION OF CONTROL BY HANDLE:

By pulling the handle in a downward direction, you can lower the plissé. By pushing the handle in an upward direction you can lift the plissé. The plissé can remain in any selected position. For difficult to access places (e.g. ceiling windows), the handle and the bar can be used as a control. Attach the adapter on the handle so it clicks. By drawing the bar you can lower downwards / by pressing then you can lift upwards. Then remove the adapter from the handle by moving to the side (sides). Note: This manner of control is valid for all forms of plissé (rectangular, square, triangle, bevelled, folding).

NOTIFICATION:

The handle can be set at several angles according to the location and access to the product. This setting is permitted immediately after installation and it is not recommended to change it. If this requirement is not kept there can be irreversible damage and devaluation of the product.

2. MAINTENANCE



Pleated fabrics are easy to clean.

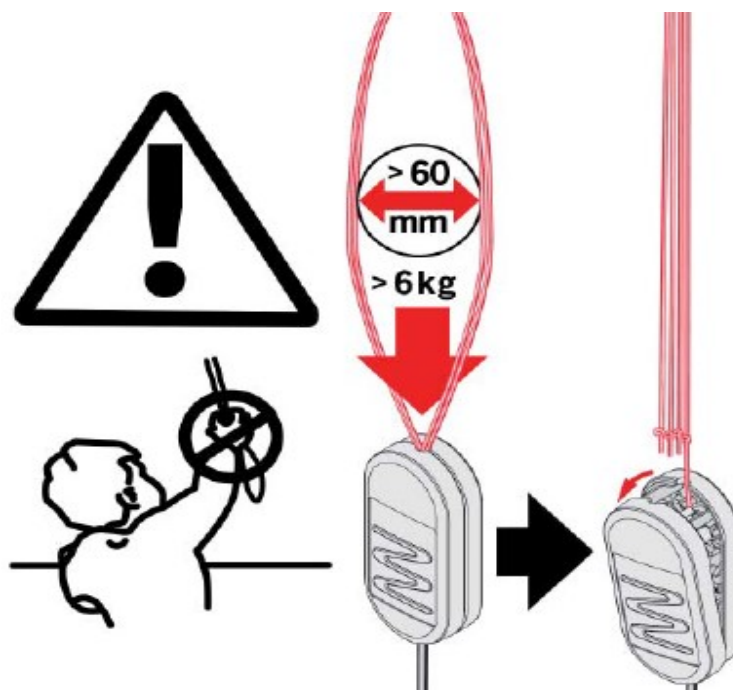
- Simply wash the blind in a solution of warm water of max. 30°C and a mild detergent.
- Rinse thoroughly, push the fabric into stack and carefully squeeze the water out until the blind does not drip any longer.
- Hang the blind up in closed position. Open and close the blind several times while allowing it to dry to prevent the pleats sticking together. **DO NOT IRON!**

This excludes all metallised fabrics as well as coal-coated black out fabrics and B1-qualities. These can be carefully wiped clean with a cloth. Do not rub!

We advise against chemical or ultrasonic cleaning and do not accept warranty claims in such cases.

We advise against chemical or ultrasonic cleaning and do not accept warranty claims in such cases.

3. SAFETY INSTRUCTIONS



Important note

Pursuant to the EN 13 120 standard, we hereby call your attention to possible hazards posed by the use of pull cords and chains!

Safety instructions / strangulation hazard:

- Young children have been strangled by loops in pull-cords, chains and tapes, and cords that operate the product.
- To avoid strangulation and entanglement, keep cords out of the reach of young children. Cords may become wrapped around a child's neck.
- Move beds, cots and furniture away from window covering cords.
Install the enclosed safety components to make sure cords do not twist and create a loop.
- Do not use force when handling the product if any obstacle prevents its motion.
- Do not attach any items to the product (particularly on the lamellas, control cords, nylon and draw bars).
- Prevent mechanical stress and damage to the product.
- For products controlled by cords, keep cords out of the reach of children to prevent entangling and jamming.
- Handle the product carefully, especially during cleaning.

NOTES:

- If the product is not functional, contact the seller or the firm which assembled the product.
- The display of the product may slightly differ from the actual version. The producer reserves the right to make changes.
- After the termination of the service life, do not dispose of in communal waste. Materials used can be separated and handed over in accordance with the valid regulations on waste and environmental protection.
Information on waste collection points can be obtained from the local administration office.