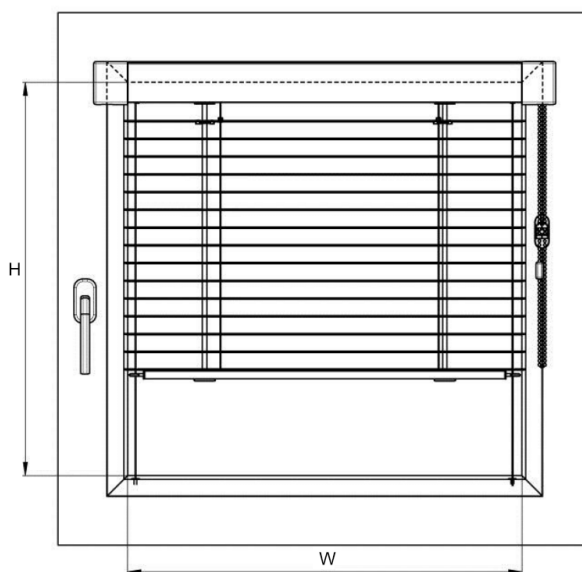
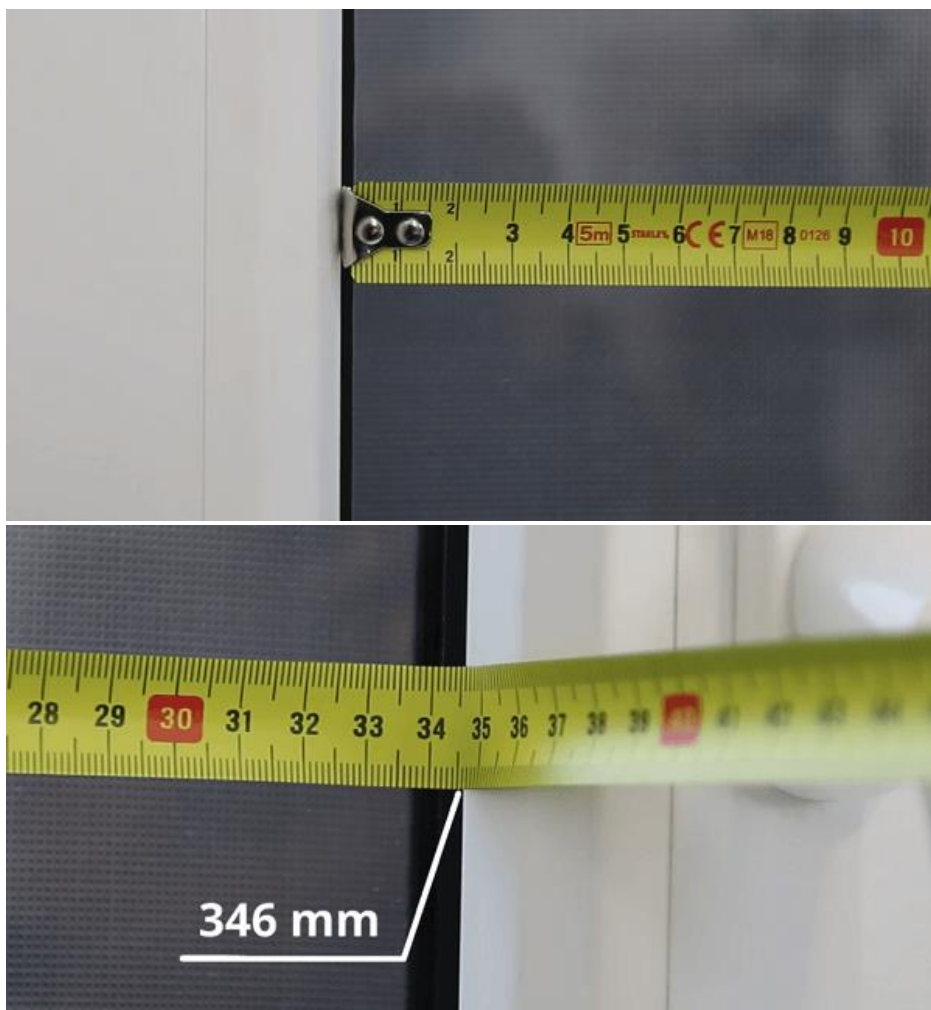


Instructions for measuring and ordering HIT horizontal blinds

1) Measuring the width of the horizontal blind

We measure the width of the horizontal blind close to the glass, from the left inner side to the right inner side of the glazing bead, including the rubber seal.

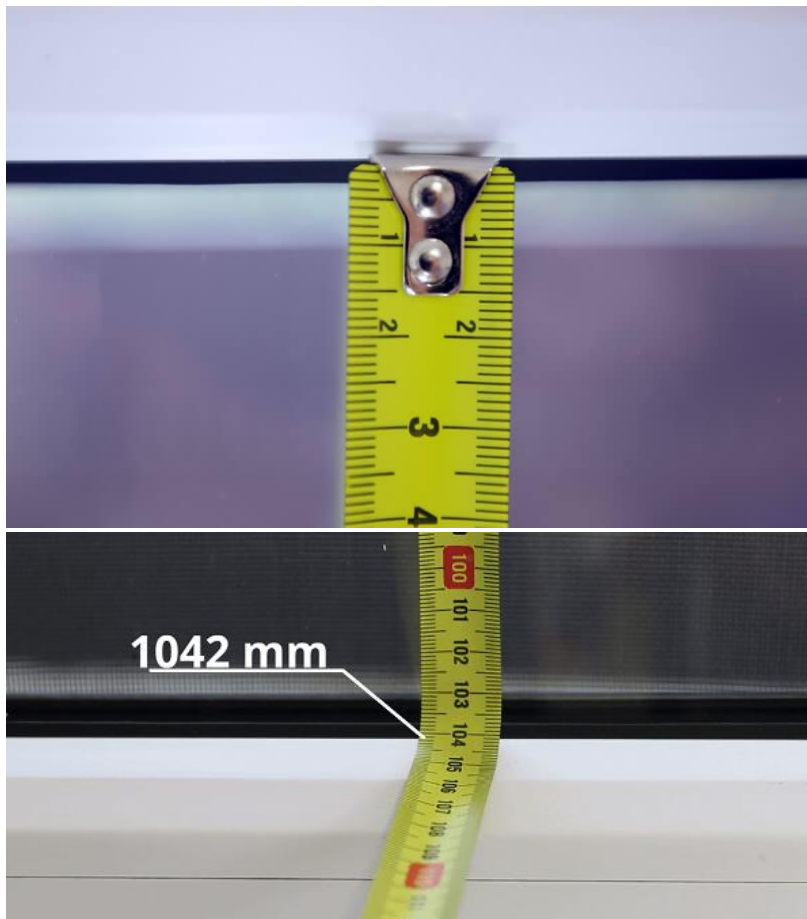




TIP! It is always a good idea to measure the width of the blind in three places - in the middle, at the top, and at the bottom of the glass surface, in case the window is crooked, for example. If the dimensions differ, put the smallest measured number in the order form.

2) Measuring the height of the horizontal blind

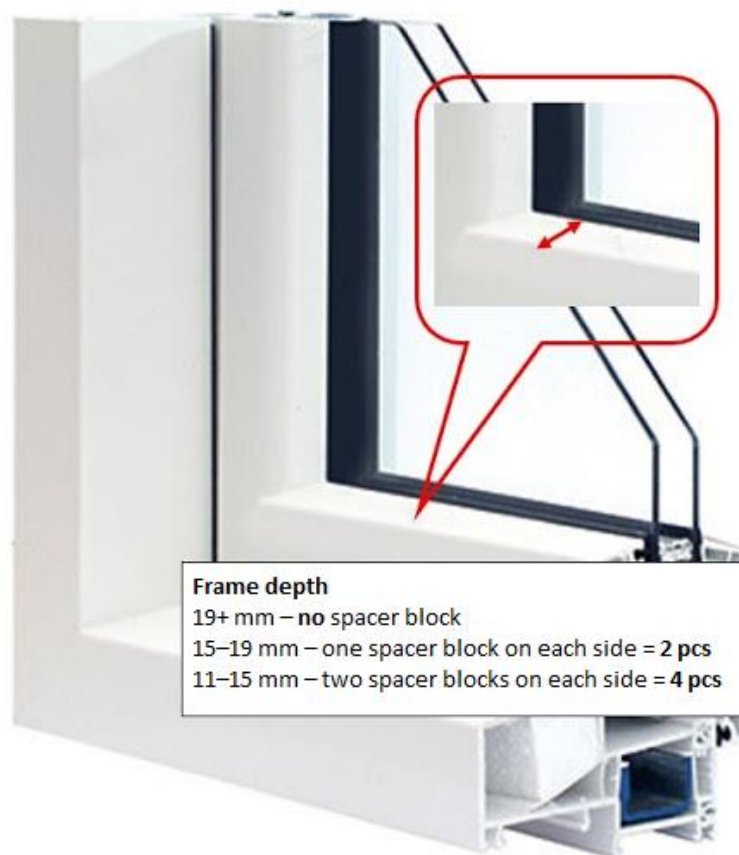
We measure the height of the blind at the same depth as the width, including the glazing bead.

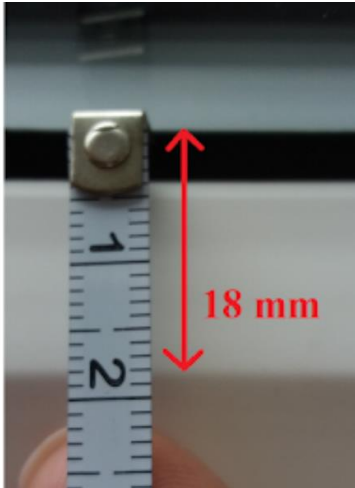


TIP! In order to achieve the best possible shading, we recommend adding 15 mm to the measured height.

The depth of the Glazing bar

The spacer is used to underlay between the head rail of the blind and the window frame. This distance is necessary in cases where the glazing bead is too slim. To turn the blind slat, we need a certain distance from the glass, which is marked in the photo. The spacer will be delivered in a colour closest to the one of the head rail.





When is a spacer needed?

- Glazing bar depth 19 mm and more - no spacer required
- Glazing bar depth 15-19 mm - one spacer is required on each side
- Glazing bar depth 11-15 mm - two spacers are required on each side

Have you finished with the measurement?

Then just simply place an order at <https://www.labona.eu/hit-i-horizontal-blinds>

All you need to do is complete a few simple steps. After that you can send your order to us.

1. TYPES OF BLINDS

What is the difference between the types?

- **HIT I**
 - The most popular type of horizontal blinds with a square-edged head rail cover
- **HIT II**
 - Horizontal blind with a round-edged head rail cover
 - The blind has got an improved head rail design preventing the light from getting inside



2.PARAMETERS

2. CHOOSE PARAMETERS

Width

from 300 till 2000 mm

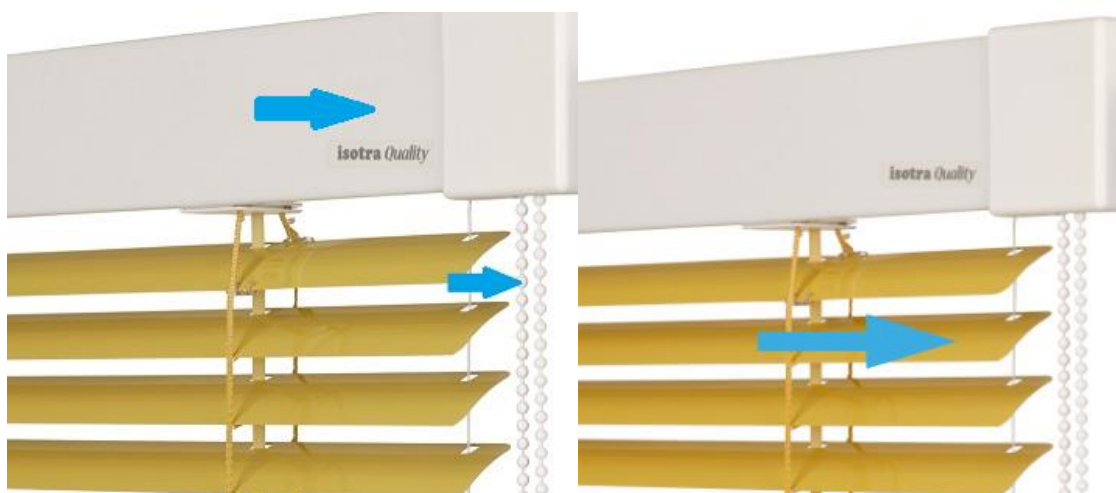
Height

from 300 till 2200 mm

Enter the parameters you have measured in the Width and height in mm fields. Pay attention to the limit restrictions!

The minimum manufacturable width and height of the blind is 300 mm, the maximum dimensions are 2000 mm of width and 2200 mm of height. The total area size of the blind must not exceed 2.5 m2.

3. COLOR DESIGN



Choose the color of your blinds from the sampler. Firstly, choose the color of the slats and then the color of the top profile. You don't have to worry about anything else, we automatically coordinate all other components for you!

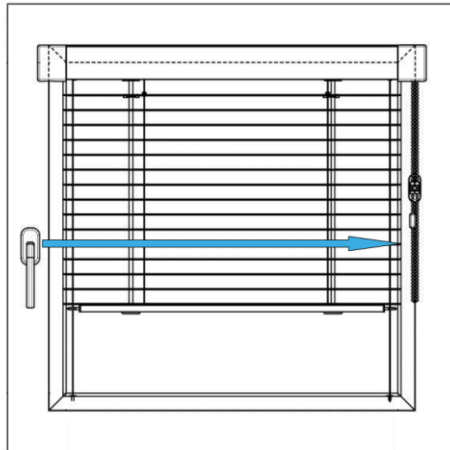
TIP! Not sure what to choose? You can match the slats according to the elements in your interior or bet on a proven classic. The most used shades of slats are basic white 1 and glittering silver 713. The color of the profile is given by default according to the color of the window. If you have white windows, then choose a white profile color. For those who have windows in imitation wood, here we offer a range of Decoral top profile sprays.

4.SPECIFICATION

5. SELECT CONTROL SIDE



In the last steps of the order, select the control page. The blind control is most often placed on the opposite side of the window handle. The chain is then easier to control. It is chosen from the front view of the window.



Have you finished?

In that case, just add the blind to the cart and send the order.

If you need any help with your order, or if you have any questions, do not hesitate to contact us at info@labona.eu.

www.labona.eu