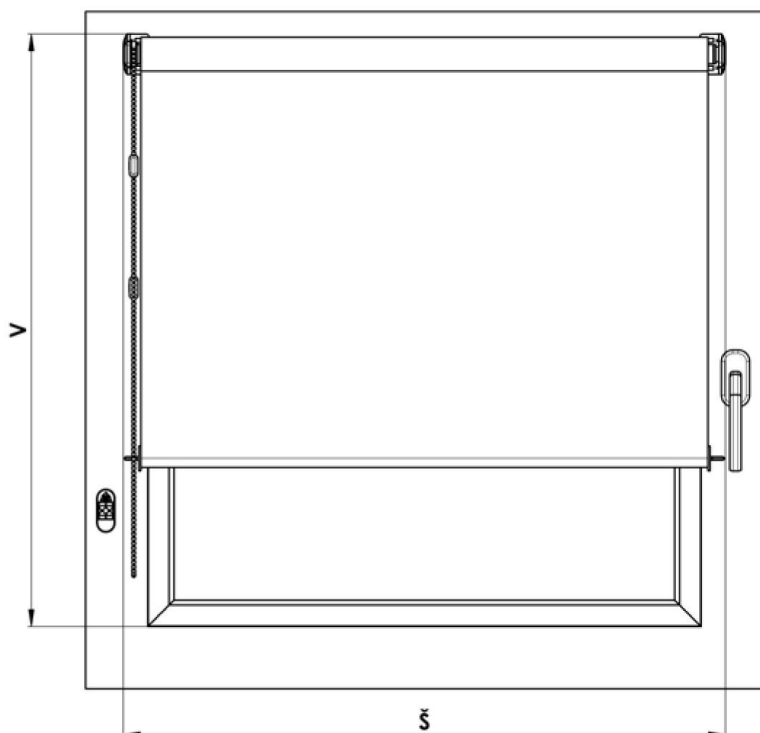


NEMO INTERIOR BLIND



1. INSTALLATION ONTO WINDOW WING:

ORDERING DIMENSIONS (DIMENSIONS OF FINISHED ROLLER BLIND):

Roller blind width X = actual width including control mechanism and side brackets of roller blind. The shaded area (fabric width) is 32 mm smaller than the actual width of the roller blind.

Roller blind height Y = total height including side brackets of roller blind.

TOOLS FOR INSTALLATION:

- drill, drill bits
- tape measure
- bit PZ2
- pencil, cutter, scissors

	Installation of side plate R+L	Attachment of top section	Attachment of chain mechanism
screw	3 x 12	3 x 20	3,9 x 16
drill Ø	2 mm	-----	3 mm

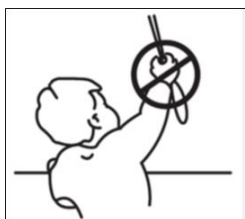
INSTALLATION:

- check the roller blind to make sure it corresponds to the required width,
- mark the holes for attachment of the roller blind plastic side parts and drill the holes with a smaller drill bit (two anchoring points for one part), the roller blind must be fitted in a horizontal position,
- attach the side brackets using the supplied screws,
- insert the shaft of the roller blind, at the opposite end to the control end, into the do component with the cross pin, inserted in the side bracket,
- fit the component with the cross pin onto the control side and insert this entire segment into the grooves of the roller blind side bracket,
- fix the inserted shaft against falling out face covers,
- using the second chain coupling set the bottom end position,
- check the functionality of the roller blind and brake.

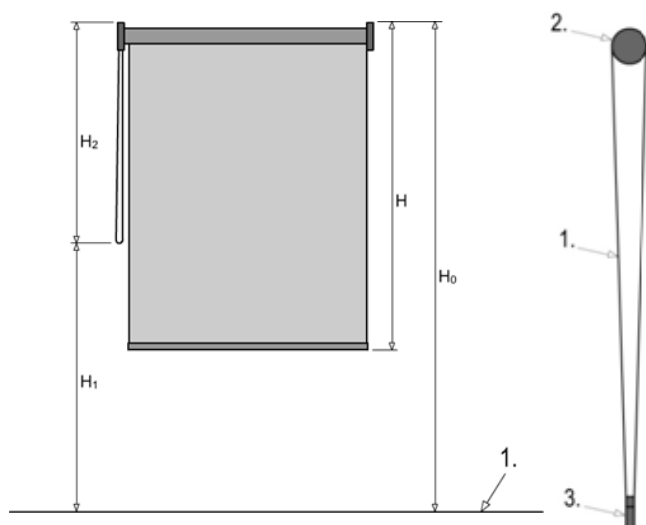
The roller blind can also be installed as a day-night fabric version. Prior to attaching the shaft into the side brackets the end of the fabric with section must be attached into the prepared holes in these brackets.

The roller blind can also be installed using special hangers without the need to screw into the window wing. The side brackets are inserted from the side into special hangers and these are then attached into window top bar.

ATTENTION!



Pursuant to the EN 13120:2014 standard, window blinds shall be installed in accordance with the following instructions:



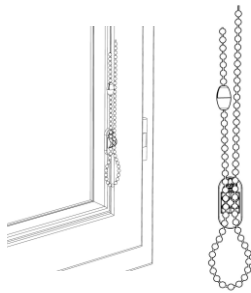
Chain:

If a breakaway coupler is used:

The chain length must be limited as follows:

- 1) If installation height (H0) is not specified, the chain length (H2) shall be less than or equal to 2/3 of the blind height (see Fig. 1): $H2 \leq 2/3 H$.
- 2) If installation height (H0) is specified, the distance from the floor to the bottom part of the pull cord (H1) shall be at least 0.6 m: $H1 > 0.6 \text{ m}$.

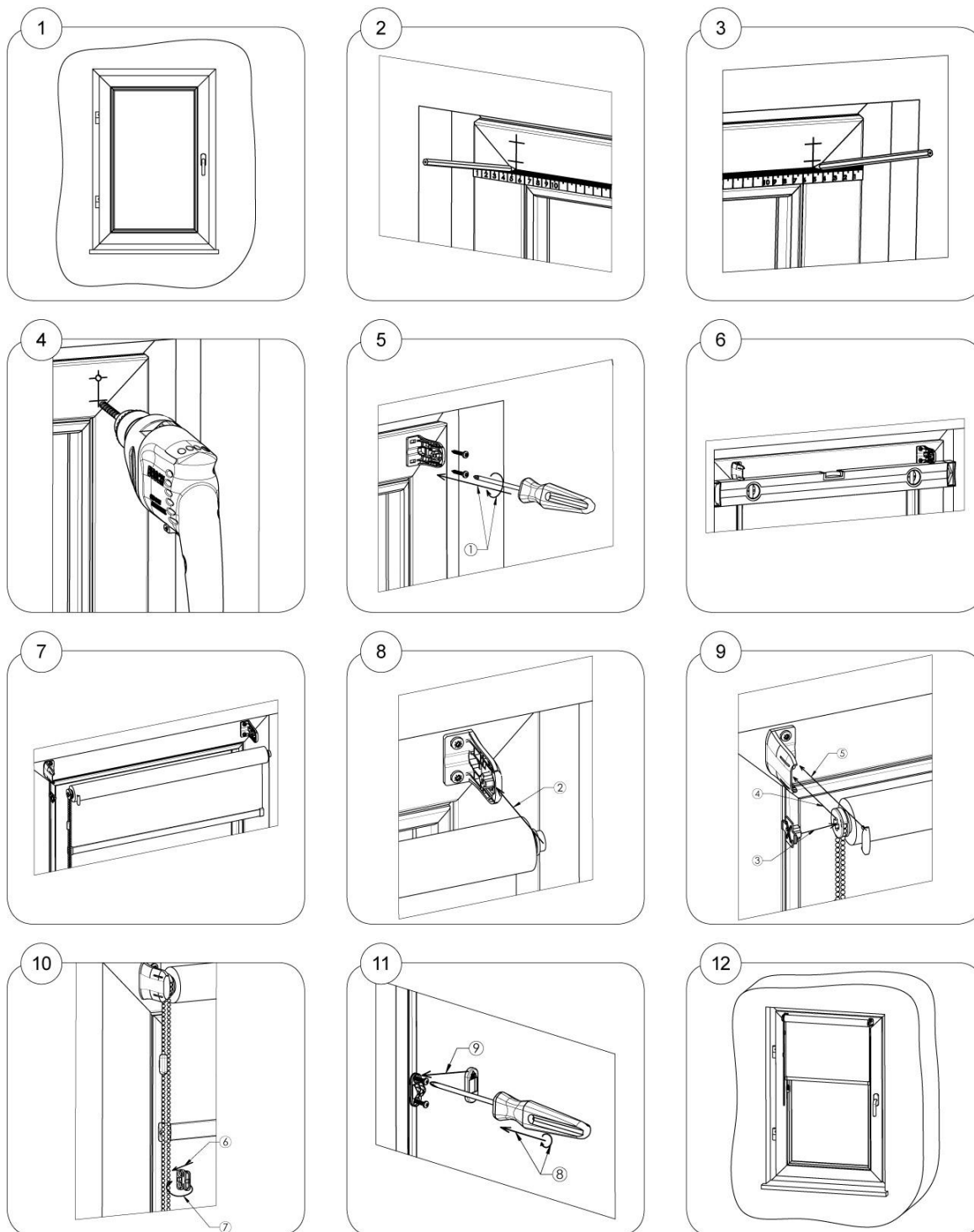
A dangerous loop must be eliminated when a mass of 6 kg is applied or within 5 seconds of application.



APPLY ONE HALF OF THE COUPLER TO EACH END OF THE CHAIN AND THEN LOCK BOTH COUPLER HALVES.

ILLUSTRATION OF INSTALLATION:

a) Installation onto side brackets



b) Installation using hangers

