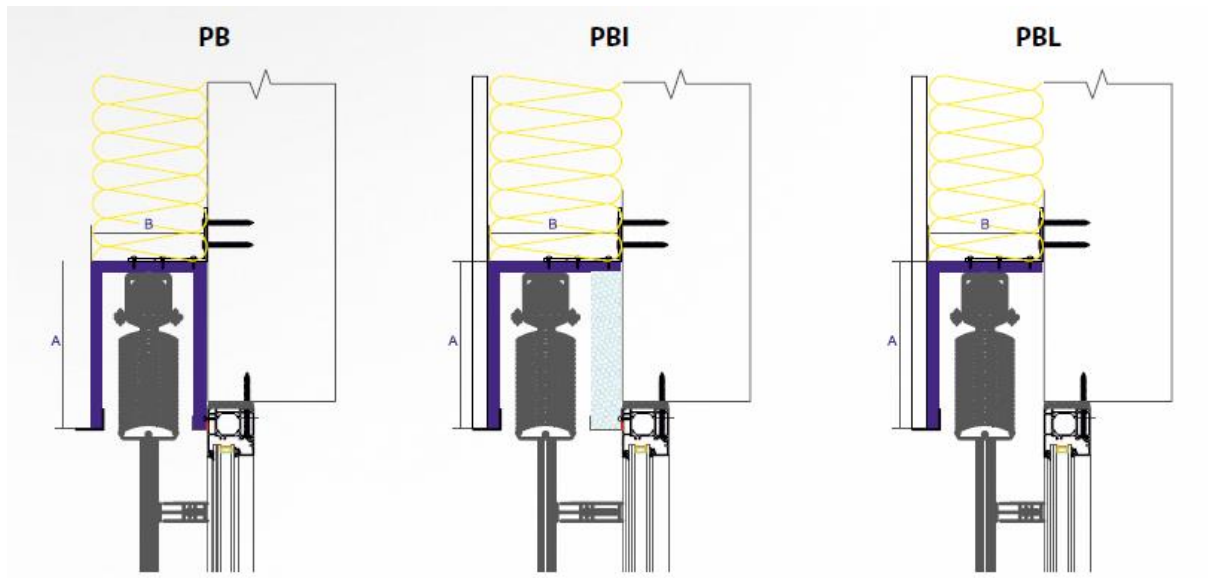


UNDERPLASTER PURENIT BOXES



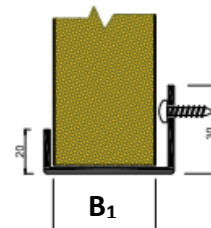
Developed box width	Developed box width	Developed box width
0–700 mm	0–700 mm	0–430 mm
701–820 mm	701–820 mm	431–460 mm
821–1000 mm	821–1000 mm	461–540 mm
1001–1200 mm	1001–1200 mm	541–610 mm

Underplaster rail



Type	Dimensions	
	H	J
20	20	3
25	25	8
30	30	13
35	35	18
40	40	23
45	45	28

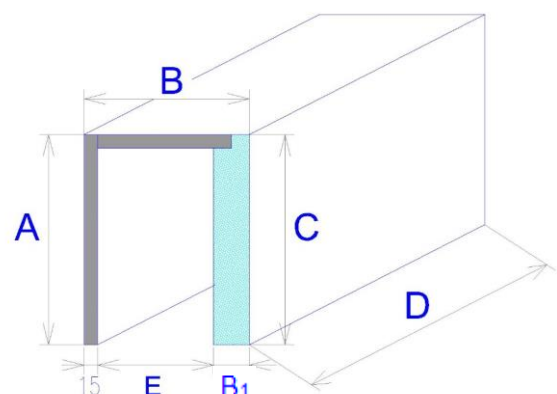
Mounting U-section



Type	Dimensions
	B ₁
PB	15
PBI 30	30
PBI 40	40
PBI 50	50
PBI 60	60

1. MEASURING THE BOXES

- A – Outside width of the box front
- B – Outside box depth $B = 15 + E + B_1$
- C – Outside height of the box rear (may differ from A)
- D – Outside box width (see Fig. 2)
- E – Onside box depth (130 mm for most types of blinds)
- B₁ – Thickness of PIR insulation



2. ASSEMBLY

Assembly may only be performed by qualified specialists!

Construction preparations for assembly: installed windows.

CHECK:

- We recommend checking all parts and components upon delivery; this will prevent possible problems. Please report to the manufacture any deficiencies and/or observations on the assembly or the blind itself.

TOOLS NEEDED:

1. Tape measure
2. Spirit level
3. Pencil
4. Hammer
5. Electric drill and drill bits according to the base material
6. Cordless drill
7. Magnetic adapter
8. PZ2, PH2 bits, magnetic adapter for 8 + 10 hexagon heads
9. Dowels diameter 10; 5 × 60 mm screws
10. Purenit screws, 4 × 15 mm
11. Screws for bearing rails, 3 × 15 mm

Recommendation:

Prior to application, Purenit must be treated with a bonding material (we recommend materials like Stavlep, etc.).

Tools needed:

1. Tape measure
2. Spirit level
3. Pencil
4. Hammer
5. Electric drill and drill bits according to the base material
6. Cordless drill
7. Magnetic adapter
8. PZ2, PH2 bits, magnetic adapter for 8 + 10 hexagon heads
9. Dowels diameter 10; 5 × 60 mm screws
10. Purenit screws, 4 × 15 mm
11. Screws for bearing rails, 3 × 15 mm

Standard assembly:

The system is prepared after the bearing rail (and the insulation inserted in the rail) covers 30 mm of the window frame from the upper side. The insulation jamb also covers 30 mm from both sides. The insulation jamb will be covered with a filler, reinforcement and clean plaster according to the system chosen.

Assembly:

1. Preparation

The Purenit underplaster boxes and insulation jambs are supplied in shrink-wrap. They bear the position numbers according to your order. The mounting brackets and other mounting components are supplied packed in cardboard.

After unpacking, check the dimensions, and then remove the bearing profile from the back of the box and make it ready for installation.

2. Mounting the bearing profile

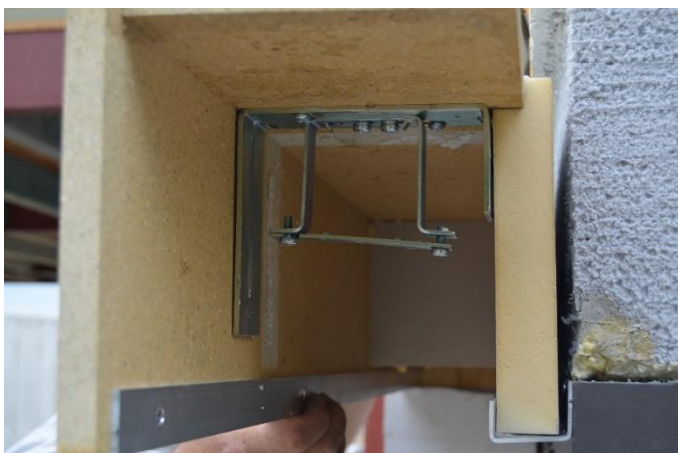
Place the profile to the window frame so that the longer side (30 mm) of the U-profile runs along the upper outer edge of the window frame.

There should be 15 mm of space from each side of the profile. Screw the profile to the frame in this position.





3. Place the Purenit box to the bearing rail and use the spirit-level to align it vertically.



4. Anchor the box by mounting brackets.
 - First, anchor the brackets to the wall using dowels and screws.



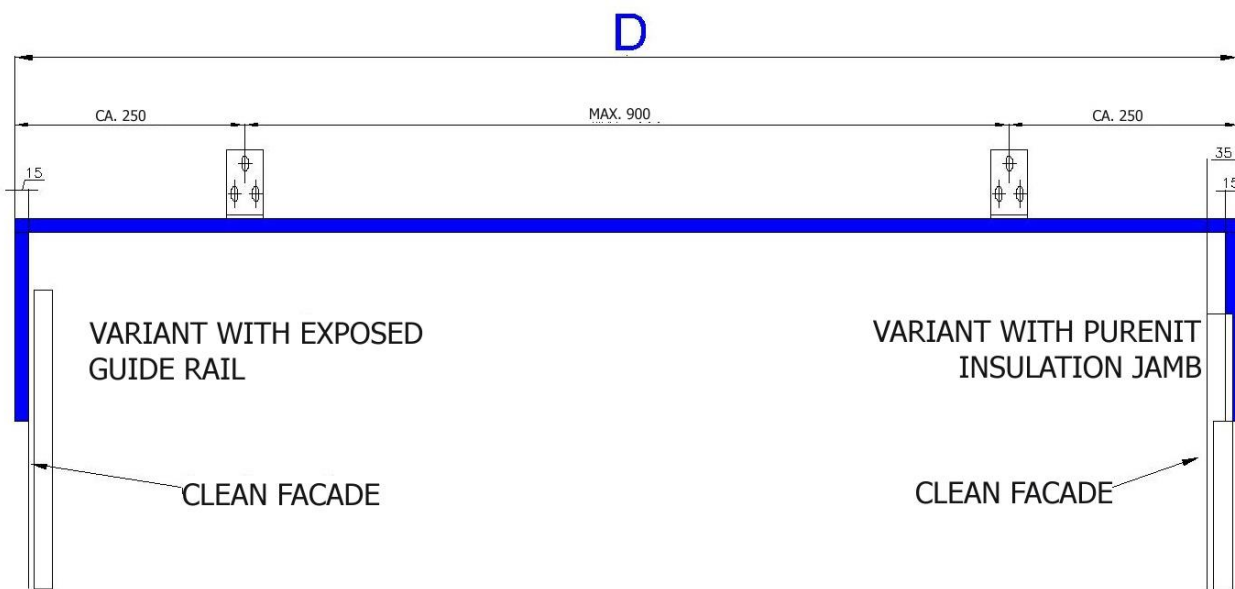


- Align the box vertically.
- Then anchor the brackets to the box using screws.
- We recommend placing a Purenit board under the foot of the bracket to break the thermal bridge.



Place the brackets 250 mm from both edges, and then space the remaining brackets evenly, 500–600 mm from each other.

Longitudinal section of the box (recommended minimum number of brackets)



* Always order the guide rail and guide rail casing together with the exterior blind

Limit dox dimensions				
Box lenght D		Dimension A	Dimension C	Dimension B
Min.	Max. in 1 piece *	Max.	Max.	Max.
450 mm	3500 mm	600 mm	600 mm	400 mm

* Boxes longer than 3500 mm are supplied in several parts – see Connection of boxes, straight and corner sets



5. Use the spirit-level to check the box levelling.



6. The last step of installation is passing the blind's power cable to the box.
 - Use a 10 mm wood or metal drill bit to drill a hole in the area where the exterior blind's motor will be installed, and pass the power cable to the inside of the box.

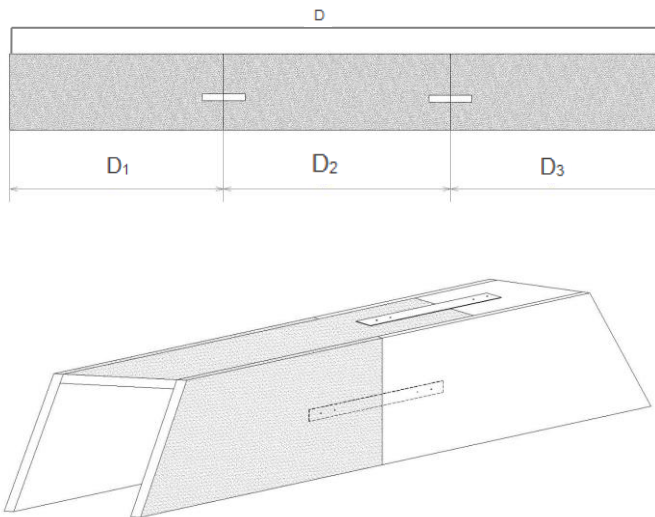


Recommendation: Penetrant material for non-absorbant surfaces must be applied to Purenit prior to applying the façade!

Do not remove the inner reinforcements from the box during the assembly! Those should only be removed after incorporating the box into the façade when installing the exterior blinds.

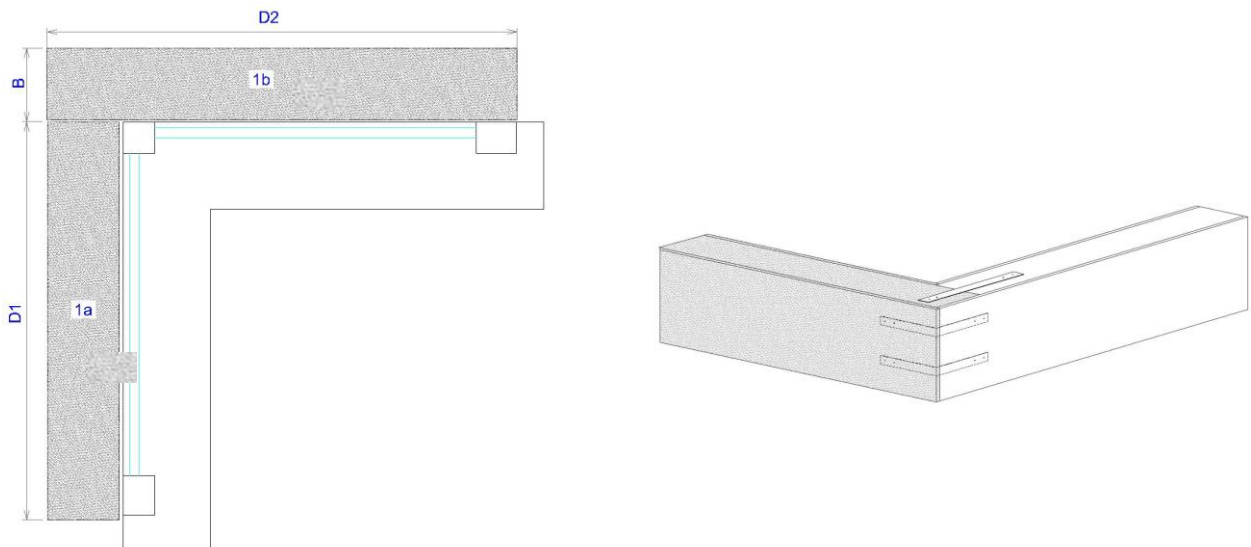
Assemblies and connections of boxes

if the box length exceeds 3500 mm (dimension of the board), it is supplied in two parts – divided in the middle. Such divided boxes are to be connected using the connecting set (couplers or angles). You can specify how the box or box assembly should be divided. In such a case, the order form should contain a simple sketch as viewed **from the exterior**.



Corner assembly

When ordering a corner assembly, specify the outside dimensions of the assembly and add a simple sketch to the order form. Corner assemblies are supplied with connecting sets (couplers or angles).



Installation of the Purenit insulation jamb:

1. The jamb is supplied in shrink-wrap. Unpack it and make ready for assembly.



2. First, attach the aluminium angles to the frame. For one jamb, 2–3 angles are used according to the length. The first angle is to be placed ca. 400 mm from the bearing section, the other ca. 300 mm from the lower edge of the window.

It is important to mount the angle so that its wall overlaps the frame by 2 mm.



3. Place the jamb to the window frame so that it fits against the angles and anchor it by screws. Anchor the jamb socket inside the box and the jamb through the angles.



Installing the blind in the Purenit underplaster box:

1. Place the blind holders so that they do not interfere with the tex. bands (minimum distance from the bearing: 100 mm). attach the blind holders using Purenit screws, 4 × 15 mm.



2. Insert the blind in the sockets and secure.
3. Connect the electric motor according to the type (use the respective manual).
4. Mount the guide rails. The guide rail for an underplaster box is divided in two. The shorter part is to be installed to the top.
Lower the blind ca. 20 mm under the box edge. Slide the slat guides to the rail, move the rail upwards and fit in the box. Then anchor the guide rail in the box using suitable flat-head screws.
5. Check the blind's movement, adjust the end positions if needed.

Installation conditions:

- Purenit boxes are manufactured with a tolerance of ± 3 mm.
- The whole Purenit box system must be incorporated in the thermal insulation system no later than 30 days from installation.
- The polystyrene spacers must not be removed from the box until complete incorporation into the façade. They are only to be removed when installing the exterior blinds.
- Penetrant material for non-absorbant surfaces must be applied to the front side of the box prior to incorporating into the façade, or a contact bridge must be made.
- The Purenit box system properties are declared in the data sheets for Purenit and PIR materials, available for download on www.puren.cz.
- No complaint can be made in case of breach of the above conditions.